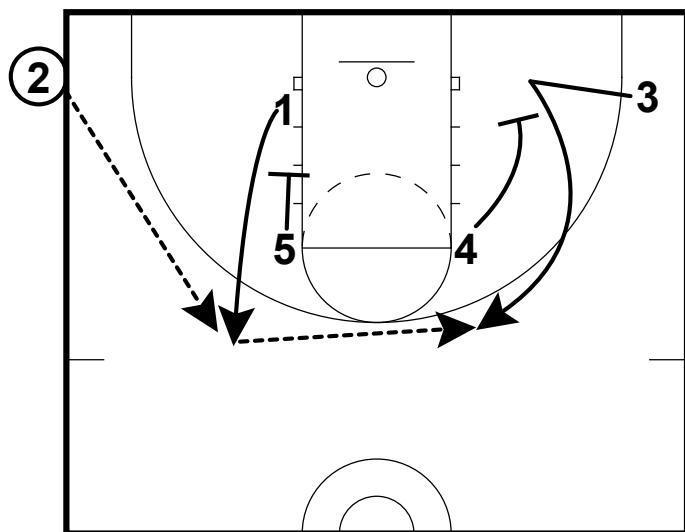
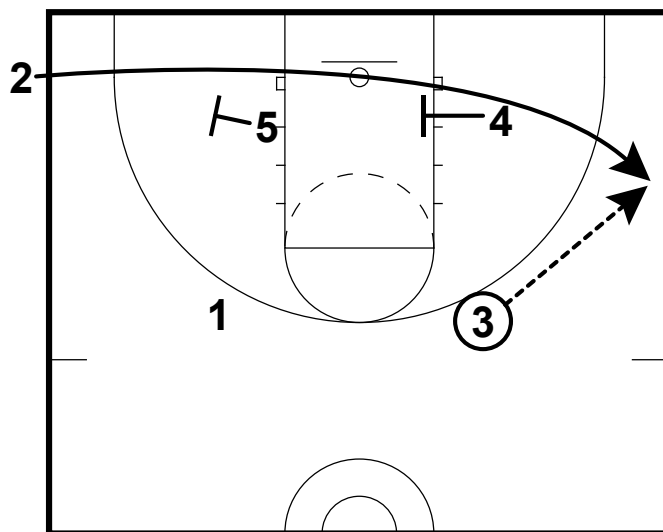


# Corner Zipper Away

## SLOB



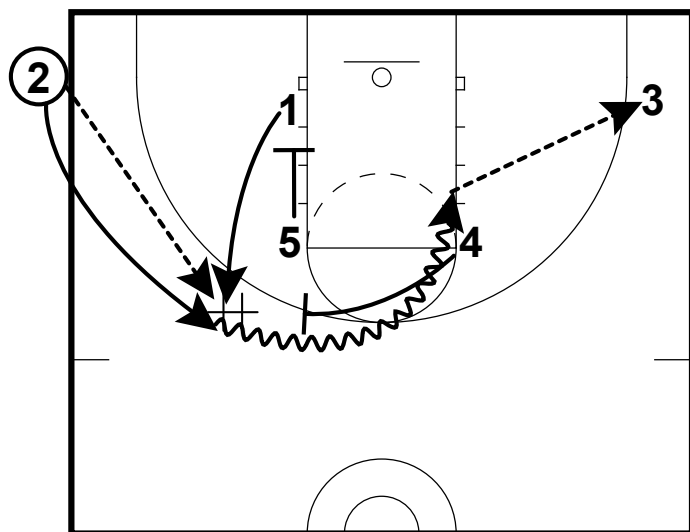
- 5 screens for 1 to receive the inbounds pass
- 4 screens away for 3 who can pop cut, curl cut or back cut depending on how his defender plays the screen



- If 3 pops, 2 comes hard along a staggered baseline screen

# Corner Zipper Rub

## SLOB



- 5 screens for 1 to receive the ball from 2
- 2 follows his pass for a hand-off where 4 will set an immediate ball screen for 2 to attack the lane
- 2 can look to score or kick out to the shooter in the corner